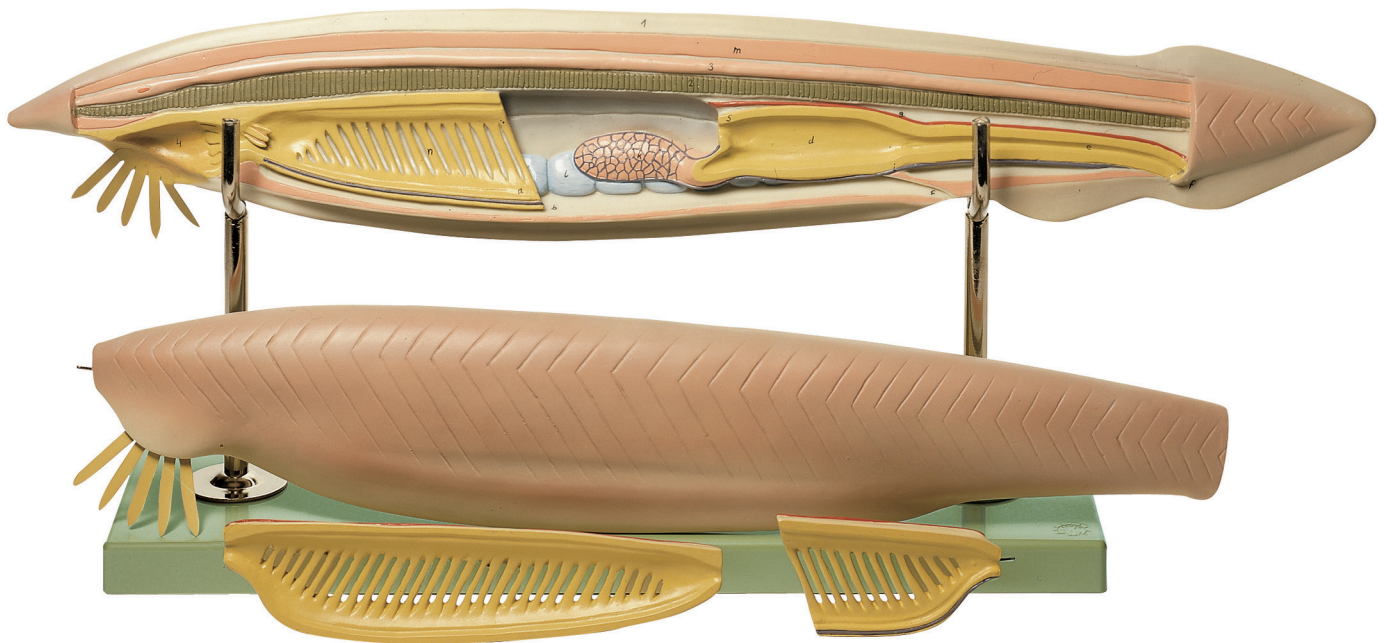


Zoology

Animal Cell Genetics

Development of Animals

Nature is our Model



ZoS 59/M • LANCET

Branchiostoma lanceolatum. Scale approximately 150:1, in SOMSO-PLAST®. The four-part model shows the structure of the body of a fully-grown specimen: fin edges, muscle segments, position of the gonads, the nervous system, the chorda, intestine, and vascular system.

Removable on a stand with green base. Height: 25 cm, width: 68 cm, depth: 15 cm, weight: 2.8 kg